

rokane

TILE

Timeless
Elegance



300x450mm
Wall Tiles Collection

www.rokanetile.com



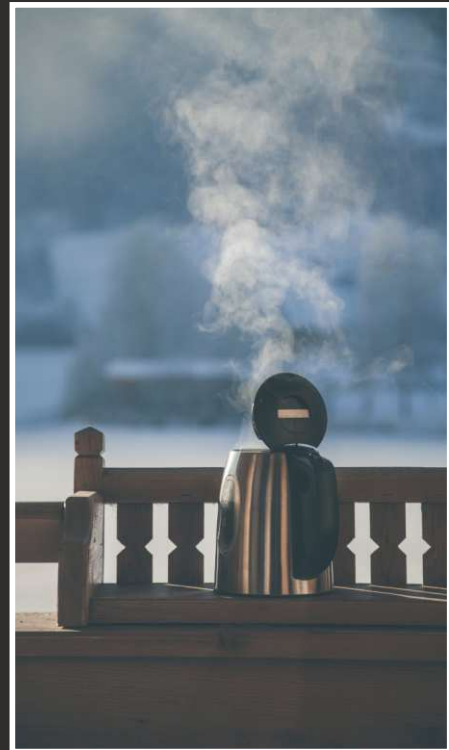
**NATURAL
CHARM**



**THE IDEAL
SOLUTION
FOR LIVING.**



**DESIGNS
TO CREATE
PERFECT
ATMOSPHERE.**



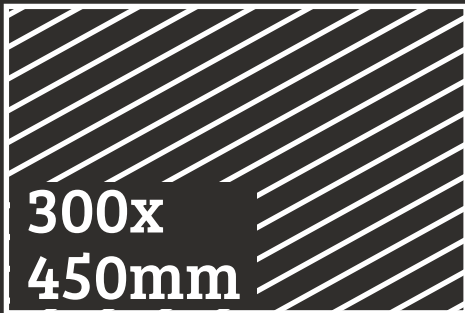
SURFACE THAT REFLECT YOUR STYLE.

The Wall tile range is a highly durable one, thanks to the application of production processes in a constant state of evolution.

In addition to its wide variety of colours, finishes and types, indoor comes in hundreds of different looks for use on façades. Outdoor combines state-of-the-art technology with ground-breaking visual designs

Modernity meets tradition in a collection offering the ancient strength of stone in a new ceramic option that lends interiors and exteriors a timeless charm.

SIZE :



GREAT ADVANTAGES :



RECTIFIED
TILES



WALL
TILES



ZERO
MAINTENANCE



ECO
FRIENDLY



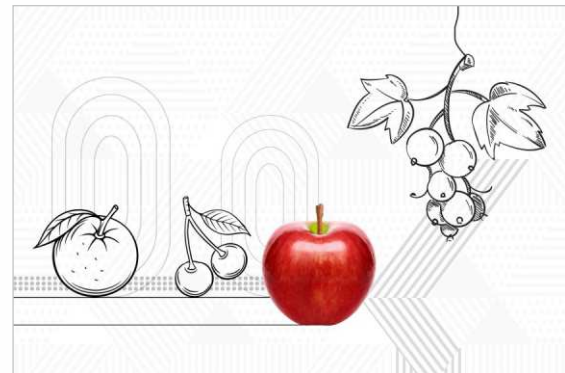
WATER
RESISTANCE



UV
RESISTANCE



5001-LT



5001-HL1



5001-HL2



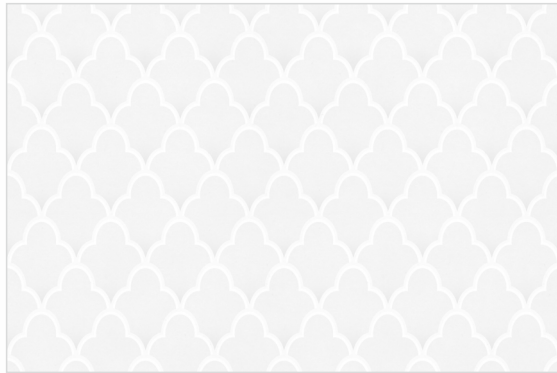
5002-LT



5002-HL1



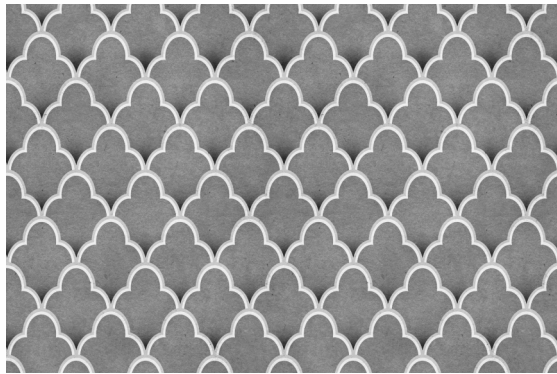
5002-HL2



5003-LT



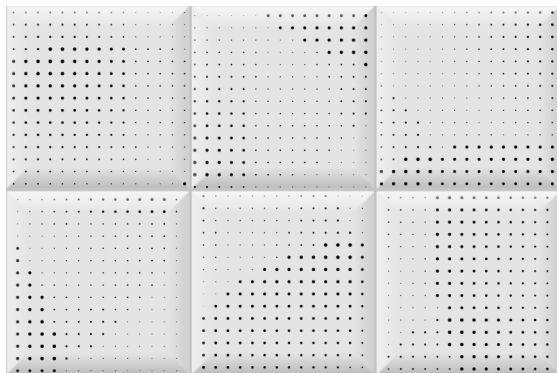
5003-HL1



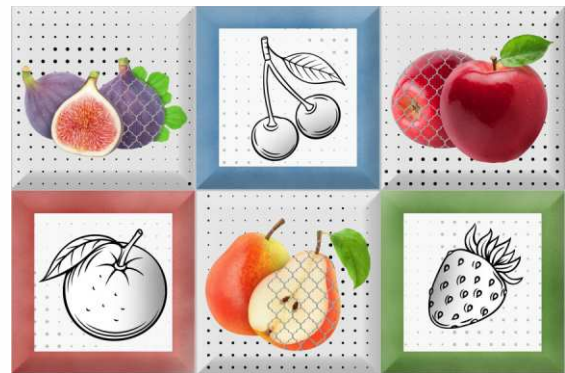
5003-DK



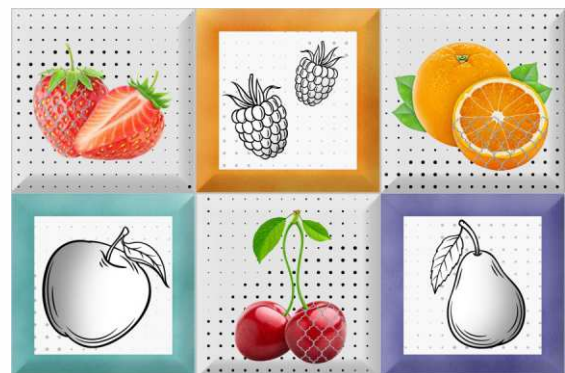
5003-HL2



5004-LT



5004-HL1



5004-HL2



5005-LT



5005-HL1



5005-HL2



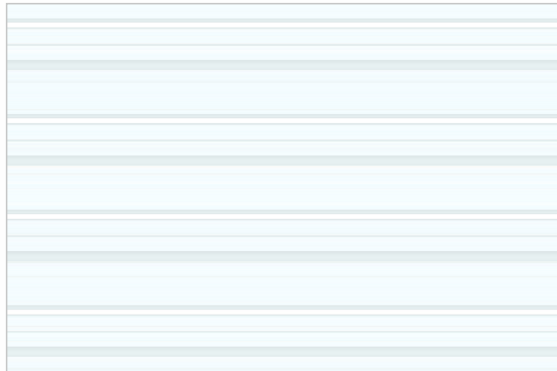
5006-LT



5006-HL1



5006-HL2



5007-LT



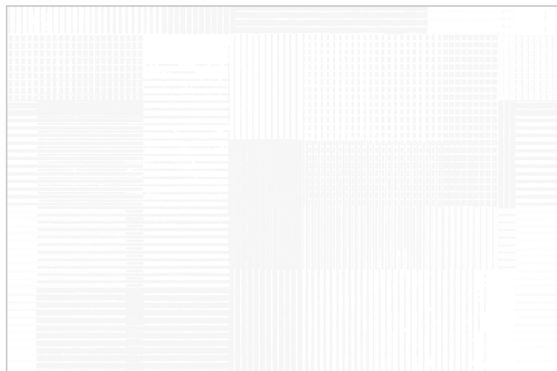
5007-HL1



5007-DK



5007-HL2



5008-LT



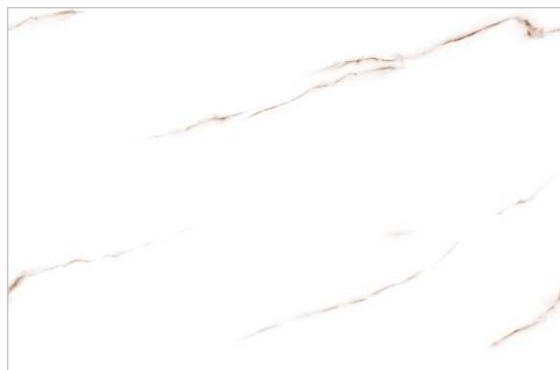
5008-HL1



5008-HL2



preview of 5007



5009-LT



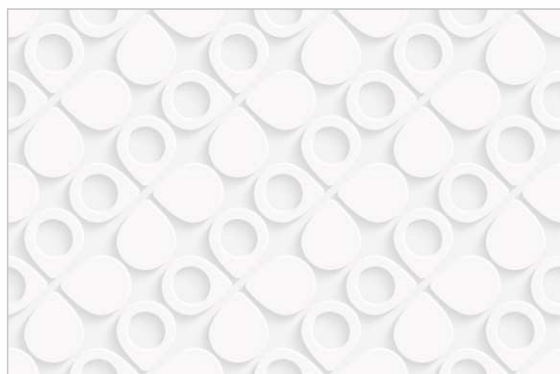
5009-HL1



5009-HL2



5009-HL3



5010-LT



5010-HL1



5010-HL2



5011-L



5011-DK



5011-HL3





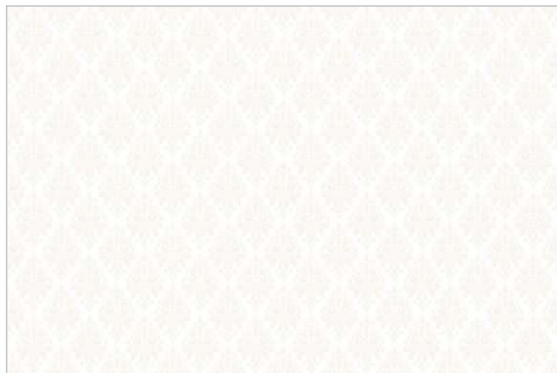
5012-LT



5012-HL1



5012-HL2



5013-LT



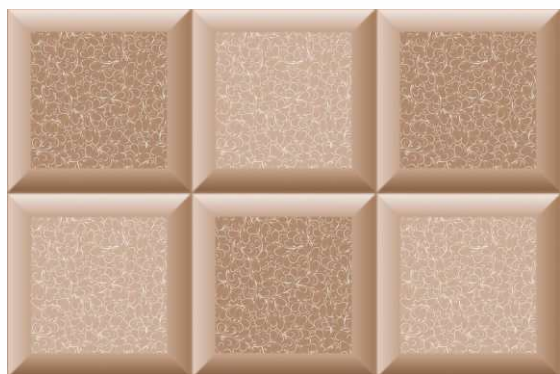
5013-HL1



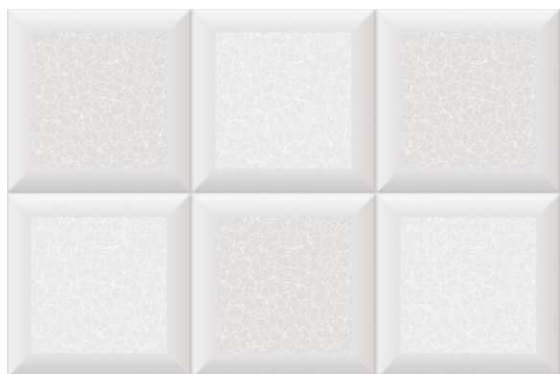
5014-LT



5014-HL1



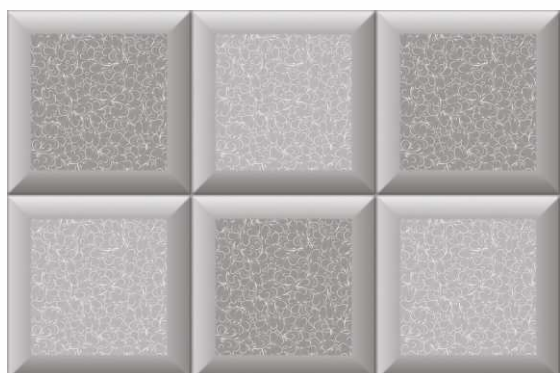
5014-DK



5015-LT



5015-HL1



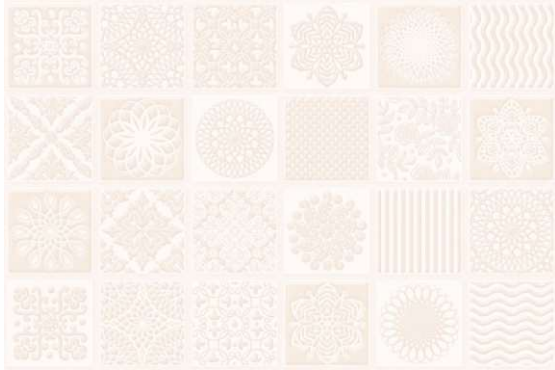
5015-DK



5015-HL2



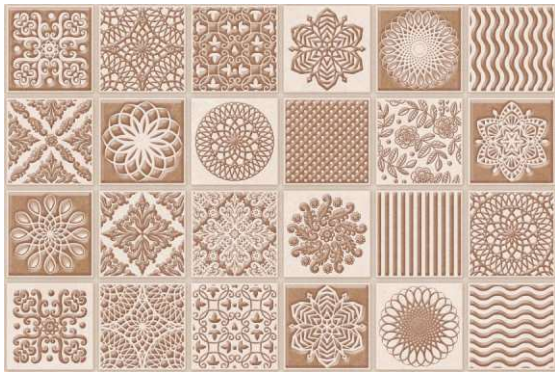
preview of 5014



5016-LT



5016-HL1



5016-DK



5017-LT



5017-HL1



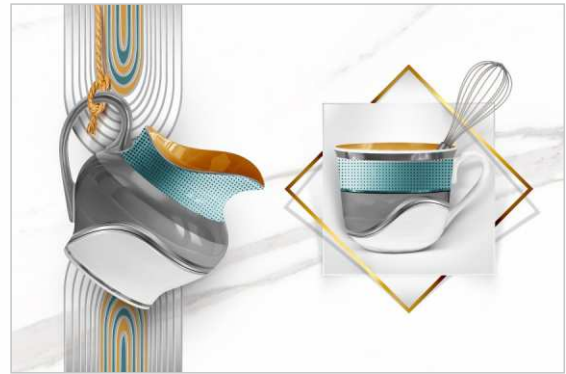
5017-HL2



5018-LT



5018-HL1



5018-HL2



5019-LT



5019-HL1



5019-HL2



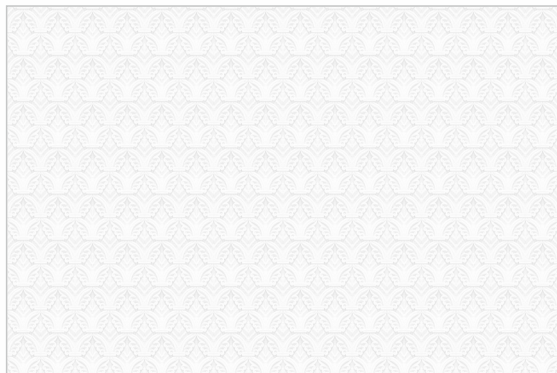
5020-LT



5020-HL1



5020-HL2



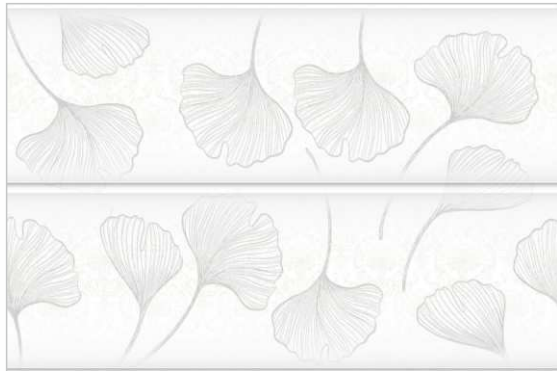
5021-LT



5021-HL1



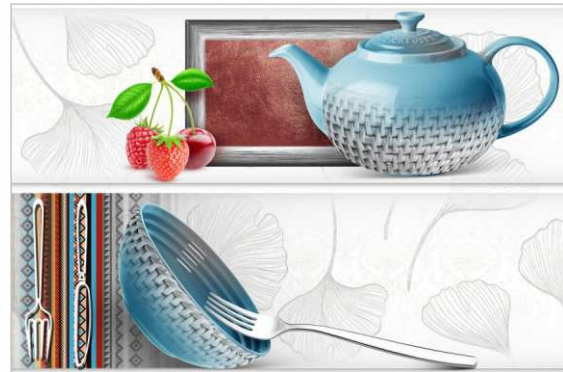
5021-HL2



5022-LT



5022-HL1



5022-HL2



5023-LT



5023-HL1



5023-HL2



preview of 5022



5024-LT



5024-HL1



5024-HL2



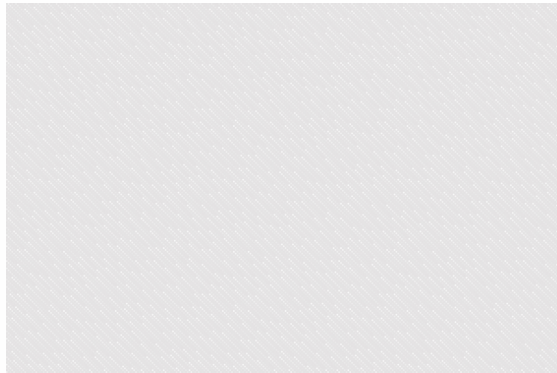
5025-LT



5025-HL1



5025-HL2



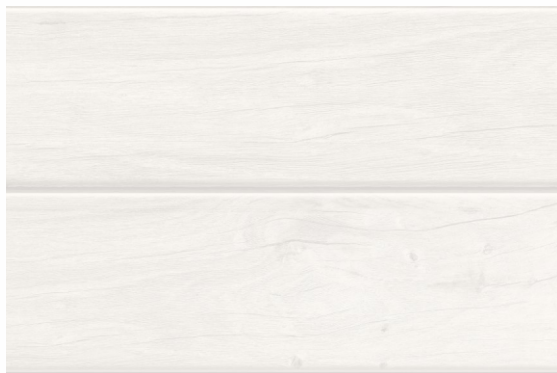
5026-LT



5026-HL1



5026-HL2



5027-LT



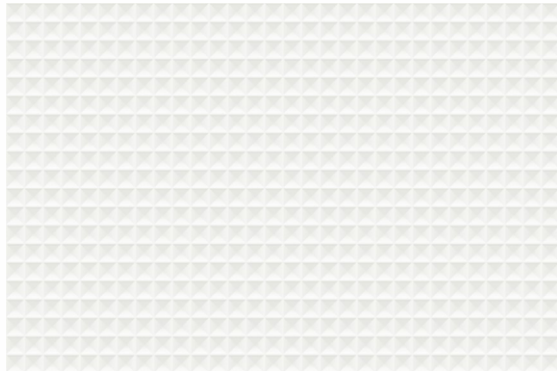
5027-HL1



5027-DK



5027-HL2



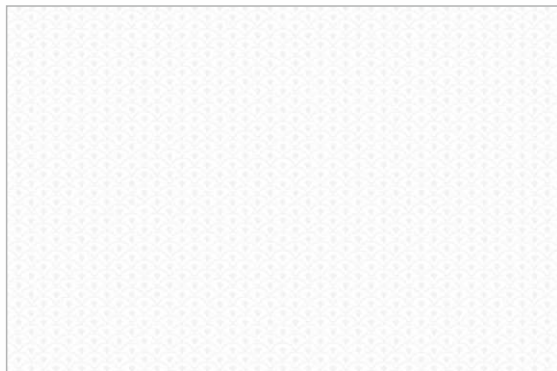
5028-LT



5028-HL1



5028-HL2



5029-LT



5029-HL1



5029-HL2



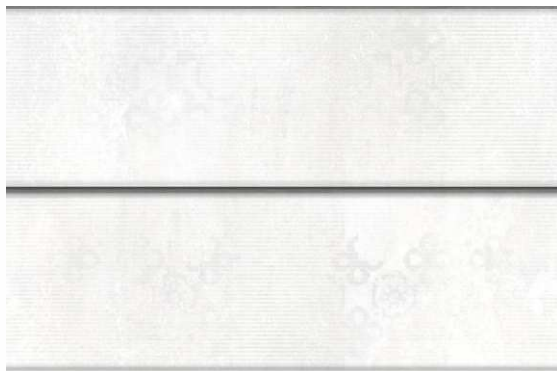
5030-LT



5030-HL1



5030-HL2



5031-LT



5031-HL1



5031-HL2



preview of 5028



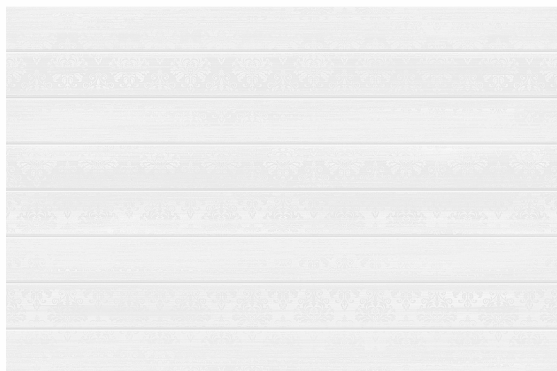
5032-LT



5032-HL1



5032-HL2



5033-LT



5033-HL1



5033-HL2



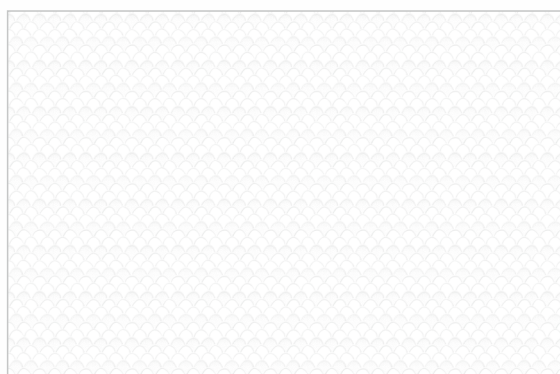
5034-LT



5034-HL1



5034-HL2



5035-LT



5035-HL1



5035-HL2



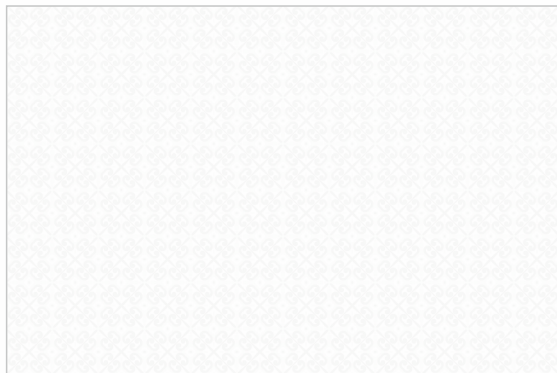
5036-LT



5036-HL1



5036-HL2



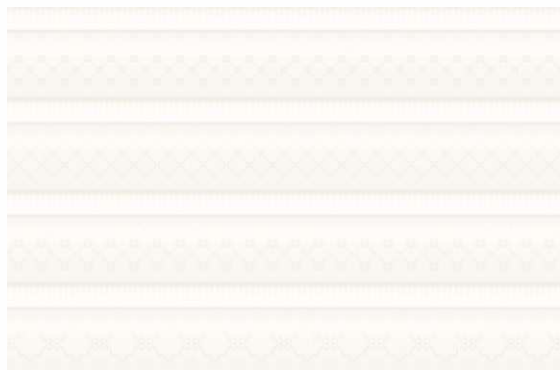
5037-LT



5037-HL1



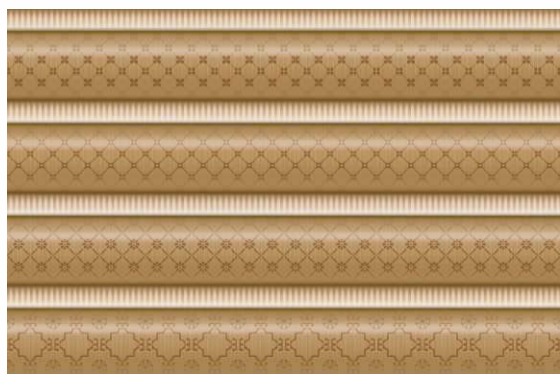
5037-HL2



5038-LT



5038-HL1



5038-DK



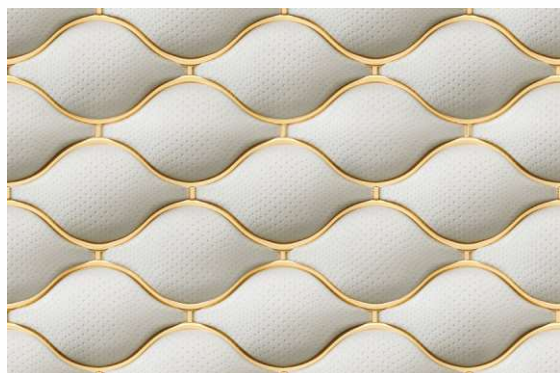
5038-HL2



5039-LT



5039-HL1



5039-DK



5039-HL2



FLOUR
WATER
SALT
YEAST
The Fundamentals of
Artisan Bread and Pastry



5040-LT



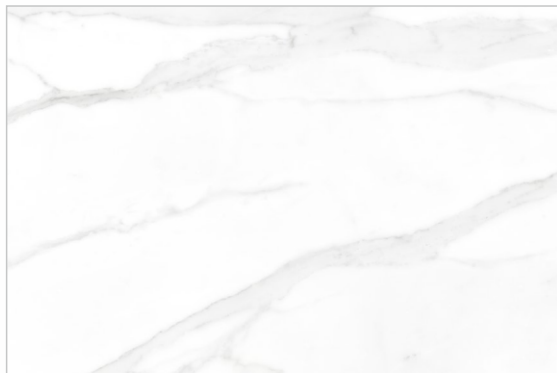
5040-HL1



5040-DK



5040-HL2



5041-LT



5041-HL1



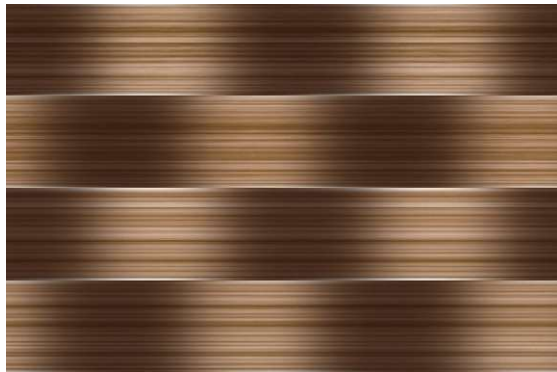
5041-HL2



5042-LT



5042-HL1



5042-DK



5042-HL2



5043-LT



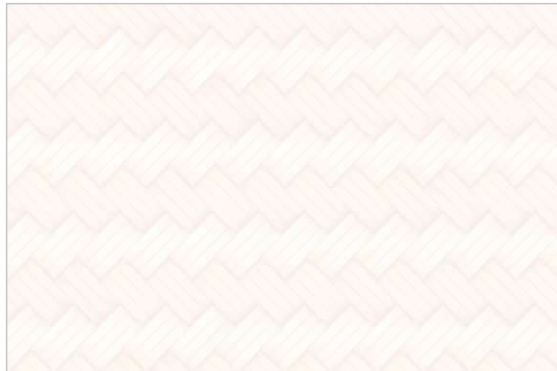
5043-HL1



5043-DK



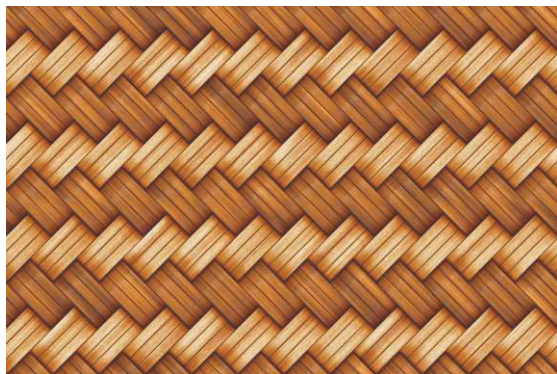
5043-HL2



5044-LT



5044-HL1



5044-DK



5044-HL3



5045-LT



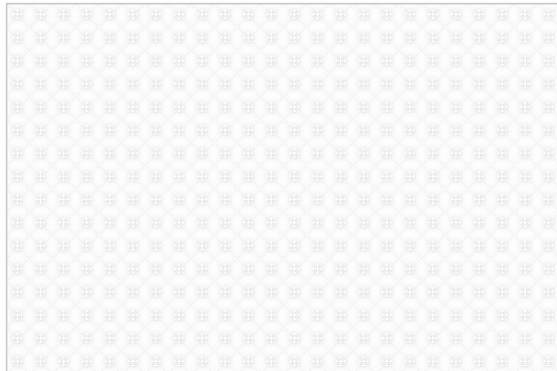
5045-HL1



5045-DK



5045-HL2



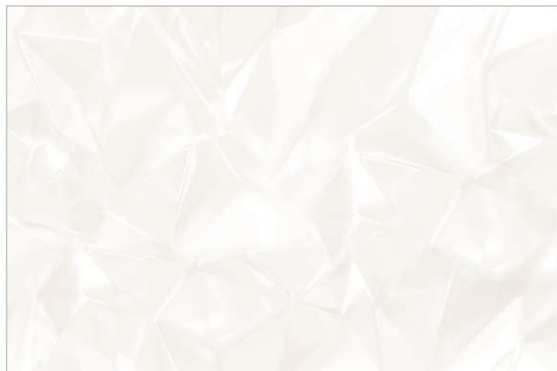
5046-LT



5046-HL1



5046-HL2



5047-LT



5047-HL1



5047-HL2



preview of 5043



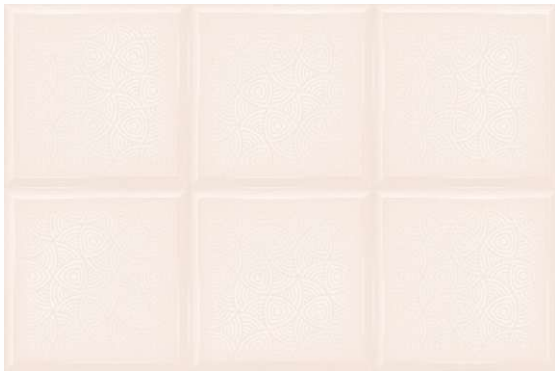
5048-LT



5048-HL1



5048-HL2



5049-LT



5049-HL1



5049-DK



5049-HL2



5050-LT



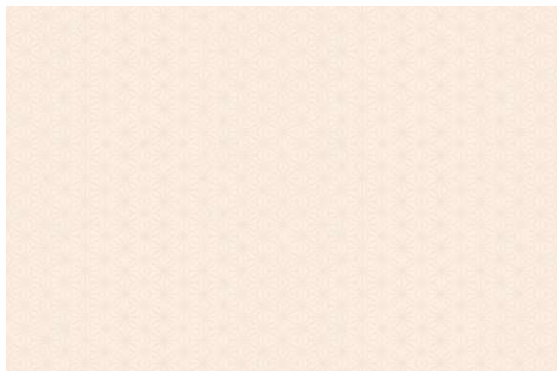
5050-HL1



5050-DK



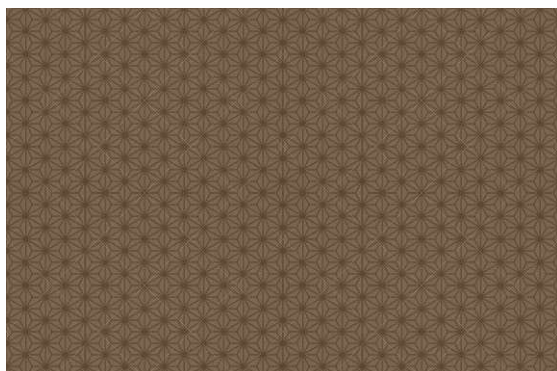
5050-HL2



5051-LT



5051-HL1



5051-DK



5051-HL2



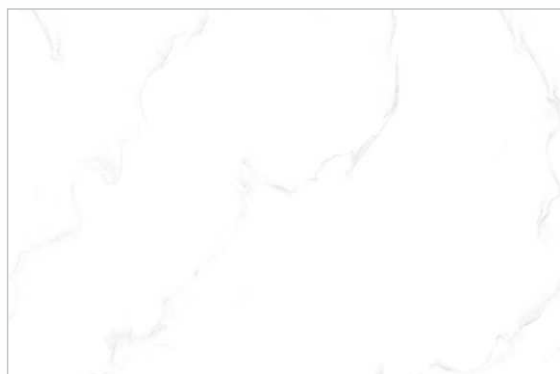
5052-LT



5052-HL1



5052-DK



5053-LT



5053-HL1



5053-HL2



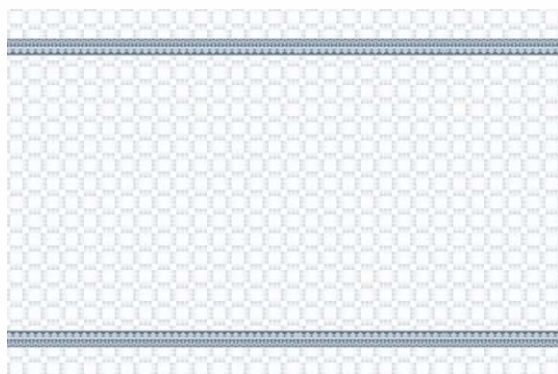
5054-LT



5054-HL1



5054-HL2



5055-LT

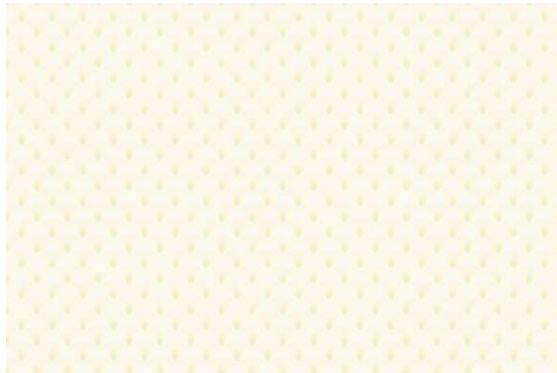


5055-HL1



5055-HL2





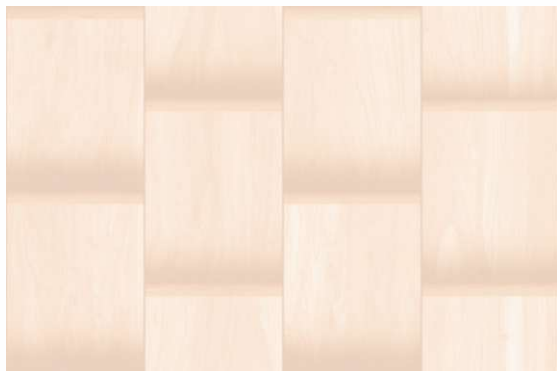
5056-LT



5056-HL1



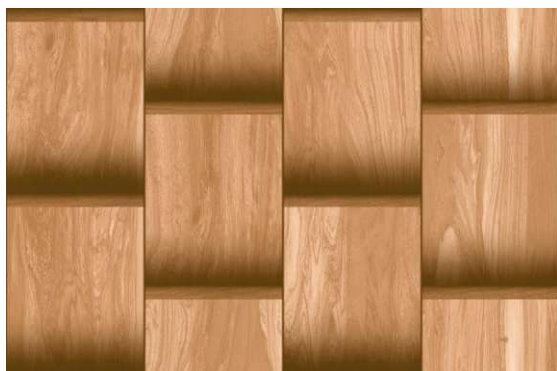
5056-HL2



5057-LT



5057-HL1



5057-DK



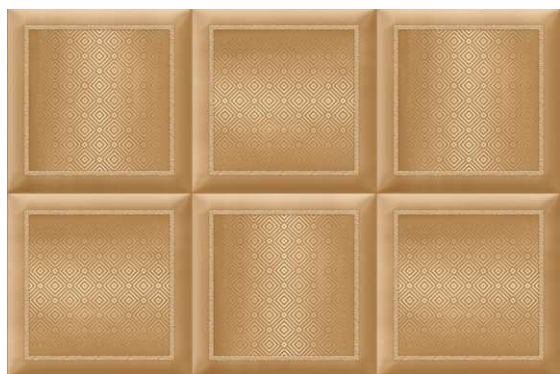
5057-HL2



5058-LT



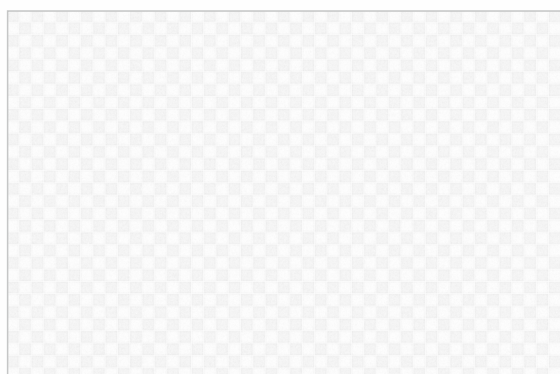
5058-HL1



5058-DK



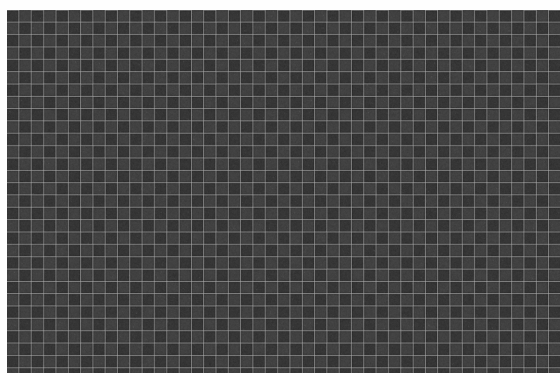
5058-HL2



5059-LT



5059-HL1



5059-DK



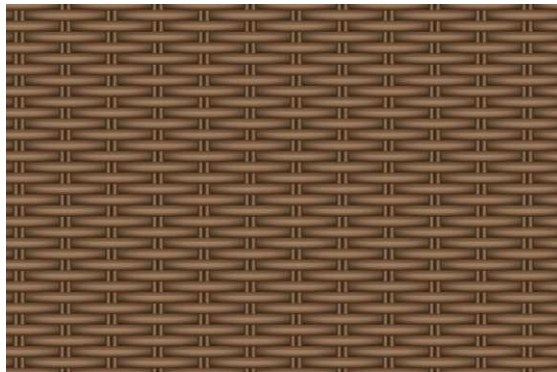
5059-HL2



5060-LT



5060-HL1



5060-DK



5060-HL2



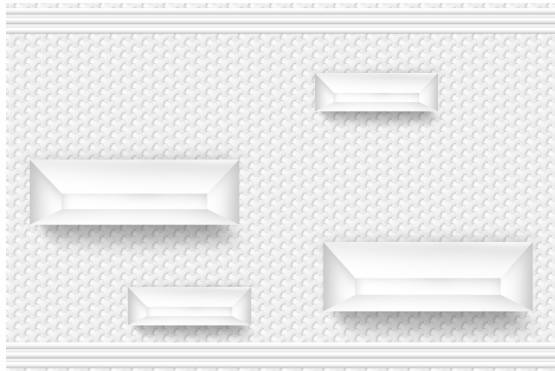
5061-LT



5061-HL1



5061-HL2



5062-LT



5062-HL1



5062-HL2



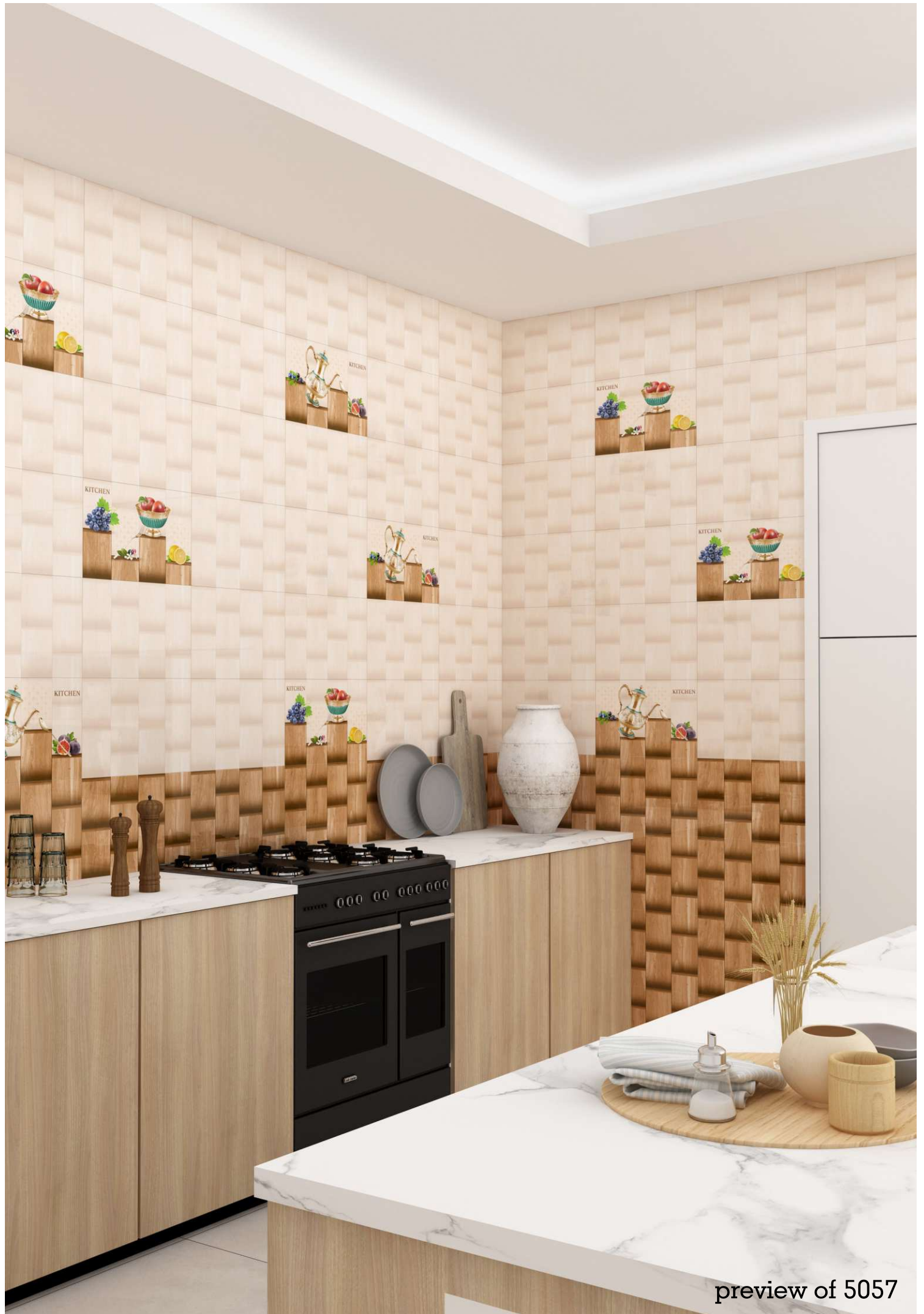
5063-LT



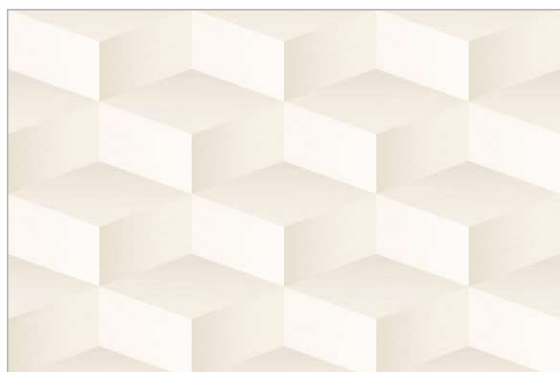
5063-HL1



5063-HL2



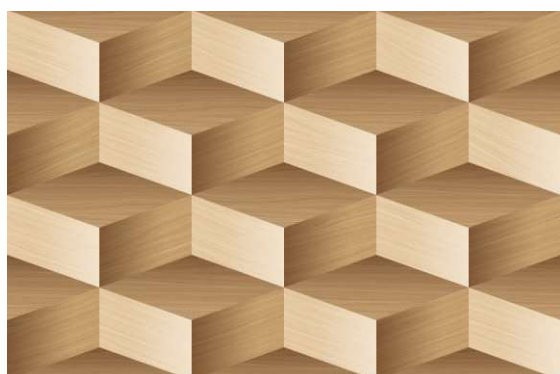
preview of 5057



5064-LT



5064-HL1



5064-DK



5064-HL2



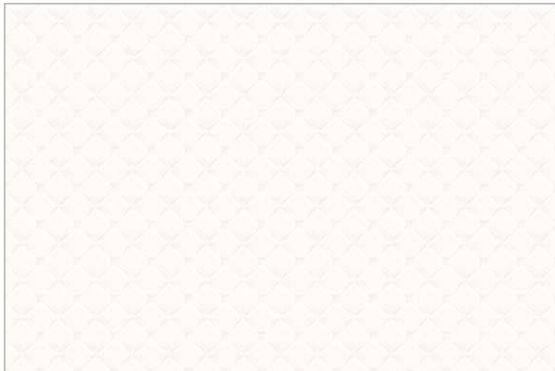
5065-LT



5065-HL1



5065-HL2



5066-LT



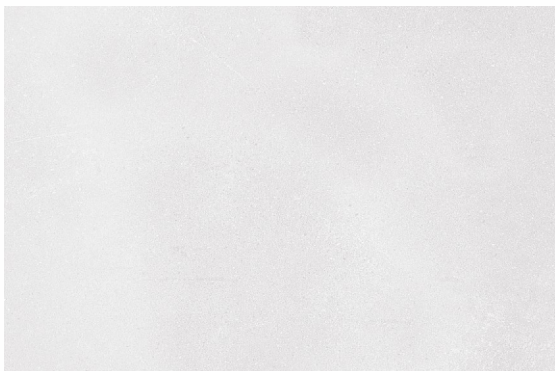
5066-HL1



5066-DK



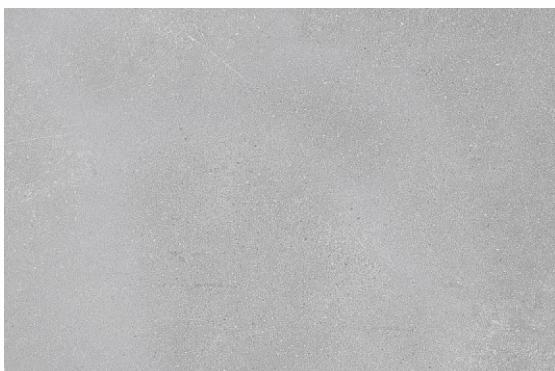
5066-HL2



5067-LT



5067-HL1



5067-DK



5067-HL2



preview of 5065

rokane

TILE

Address :

Rokane Tile
245 pacific business park
8-A national highway
Mahendranagar, Morbi-363642.

Contact :

+91 9924545555

E-mail :

info@rokanetile.com

Website :

www.rokanetile.com